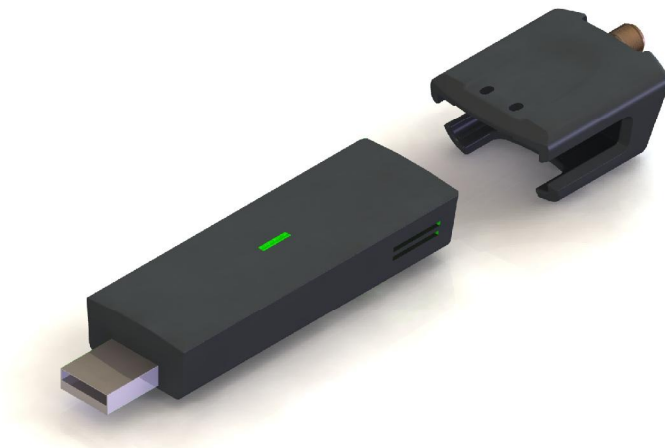


Novatel MC950D Modem-to-Antenna Adaptor

Product code: ADPT-025



This device couples to the modem internal antenna signal and diverts it to a booster antenna thereby ensuring better signal reception and ultimately better communications.

The coupler is slid over the modem (see photos). You then connect the other end of coupler to one of our booster antennas via the SMA (female) connector. The booster antenna can be mounted on the outside of the building and pointed to your closest cellular base station to ensure good reception.

Features:

- Works with Novatel MC950D USB Modem

- Lightweight

- Robust

Application:

Connecting Novatel MC950 D 3G/HSDPA modem to a high gain antenna for improved range and communication.

Specifications:

Product Code:
ADPT-025

SMA type (f) connector

Electrical:

Frequency
VSWR
Coupling Loss (min over band)
Coupling Loss (max over band)
Nominal input impedance

880-960 and 1710-2170 MHz
< 3:1 (coupled) < 10:1 (free space)
-4 dB
-7 dB
50 Ohm

Mechanical:

Dimensions (l x w x t)
Weight
Mounting

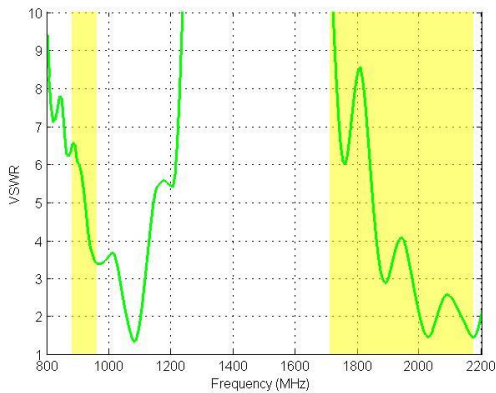
41 mm x 31 x 18 mm
20. g
Slide over modem

Environmental:

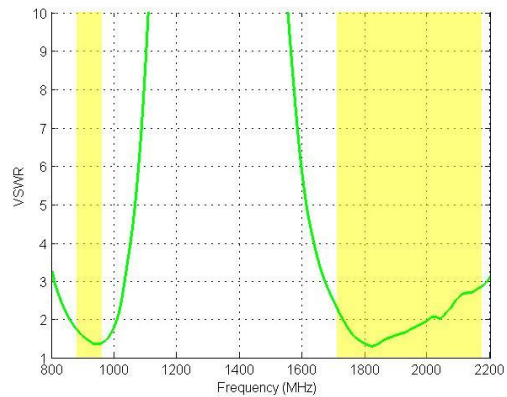
Temperature Range
Shock
Thermal Shock

- 20° C to +70° C
40G at 10 msec
-20°C to +70°C:10 cycles

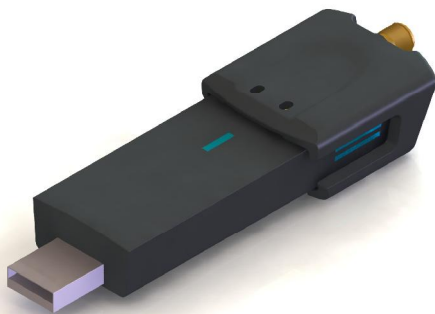
Measured VSWR



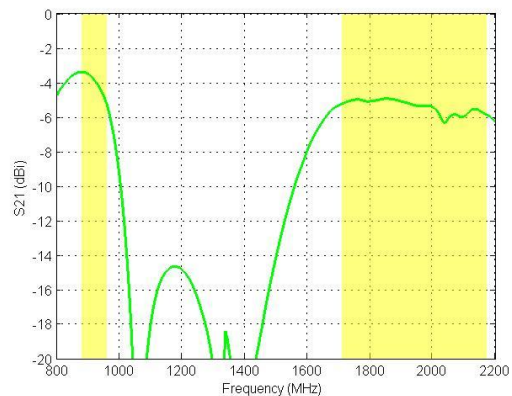
VSWR (free space)



VSWR (coupled)



Connected



Coupling Loss to Novatel internal antenna